

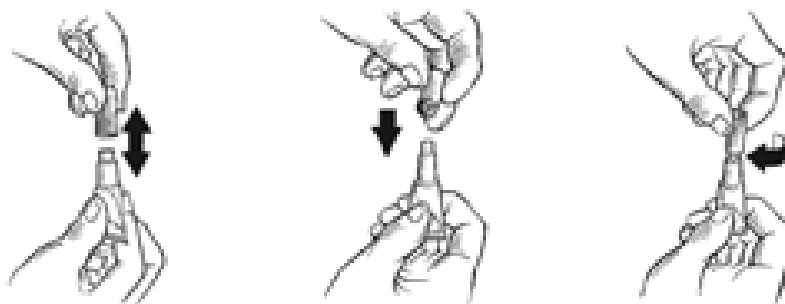
Use only as directed.

May be used on puppies as young as 6 weeks of age.

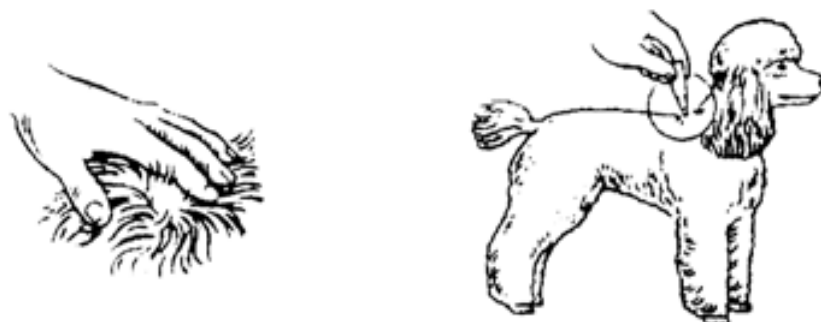
Dosage:

Body mass	Dose
Up to 4 kg	1 x 0,4 ml tube once a month
4 to 10 kg	1 x 1,0 ml tube once a month
10 to 25 kg	1 x 2,5 ml tube once a month
25 kg and over	1 x 4,0 ml tube once a month

Hold the applicator tube in an upright position. Pull cap off the tube. Turn the cap around and place the other end of the cap back on the tube. Twist cap to break the seal, then remove the cap from the tube (See diagram below.)



Part the hair on the back of the neck at the base of the dog's skull until the skin is visible. Place the tip of the tube on the skin and squeeze out the contents thoroughly to apply the solution directly onto the skin. (See diagrams below.)



In dogs weighing 25 kg and over, the entire contents of the Advantage® tube should be applied evenly to four spots along the midline of the back from the neck to the base of the tail. At each spot, part the hair until the skin is visible. Place the tip of the tube on the skin and gently squeeze to dispense a portion of the solution on the skin.

